

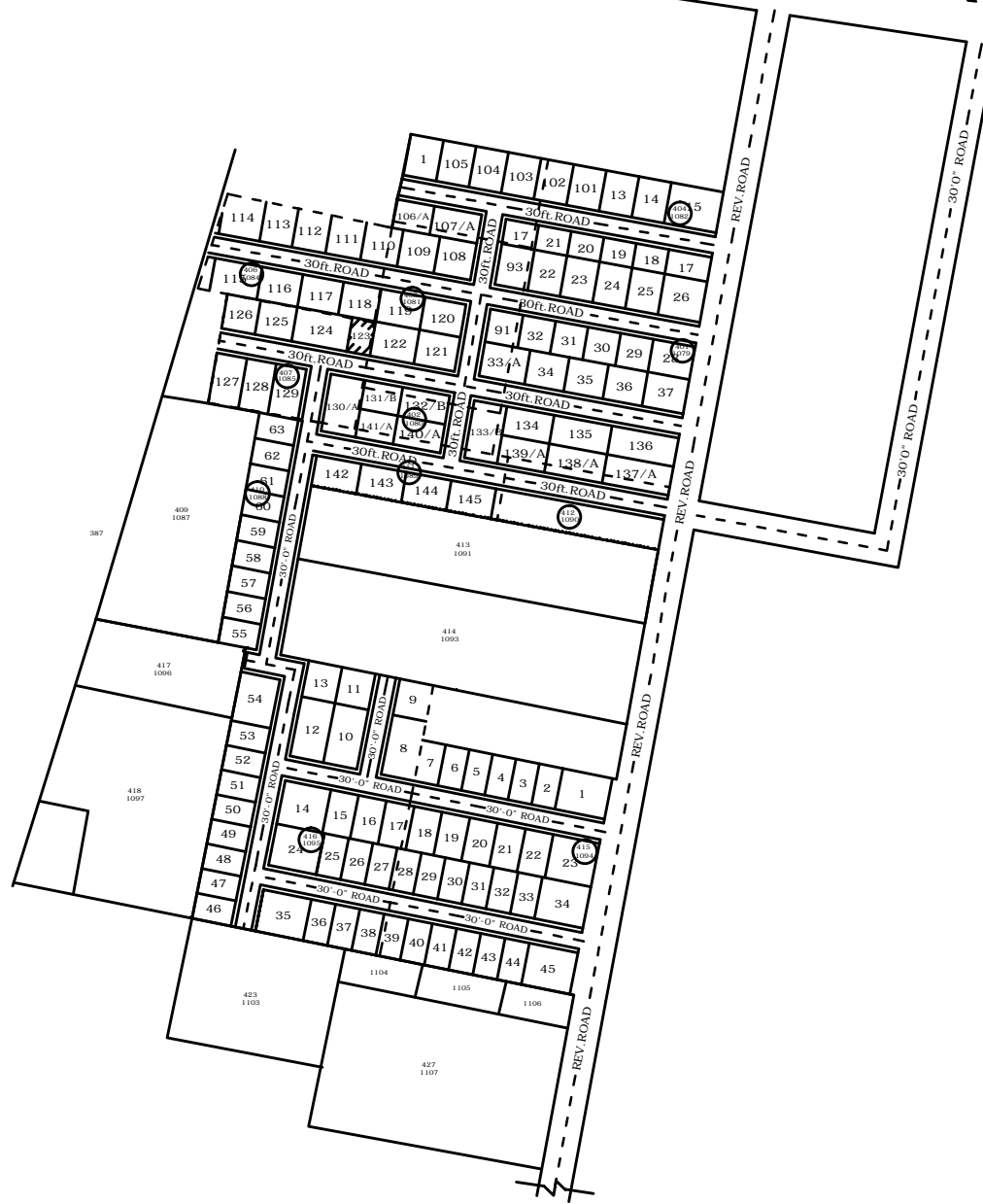
NIMRA GREEN FIELD
 MOUZA - KANTIKOTHBADA
 TAHASIL - PIPILI
 DIST - PURI



WAY TO JATANI

N.H

WAY TO PIPILI



TOTAL = A3.719/161999sqft.
 SALE = 114164sqft.
 ROAD = 47854sqft.

SL.NO	NORTH	SOUTH	EAST	WEST	SQFT.
1	61'-0"	61'-0"	50'-0"	50'-0"	3050
2-7	28'-10"	28'-10"	50'-0"	50'-0"	1441
8	73'-2"	73'-2"	41'-0"	41'-0"	3000
9	44'-5"	44'-5"	41'-0"	41'-0"	1820
10	41'-0"	41'-0"	73'-2"	73'-2"	3000
11	41'-0"	41'-0"	44'-5"	44'-5"	1820
12	41'-0"	41'-0"	73'-2"	73'-2"	3000
13	41'-0"	41'-0"	44'-5"	44'-5"	1820
14	56'-2"	56'-2"	53'-5"	53'-5"	3000
15-22	34'-3"	34'-3"	53'-5"	53'-5"	1827
23	57'-2"	57'-2"	53'-5"	53'-5"	3053
24	58'-10"	58'-10"	51'-0"	51'-0"	3000
25-33	29'-10"	29'-10"	51'-0"	51'-0"	1521
34	59'-10"	59'-10"	51'-0"	51'-0"	3051
35	58'-10"	58'-10"	51'-0"	51'-0"	3000
36-44	29'-10"	29'-10"	51'-0"	51'-0"	1521
45	59'-10"	59'-10"	51'-0"	51'-0"	3051
46-53	48'-0"	48'-0"	30'-4"	30'-4"	1455
54	48'-0"	48'-0"	60'-0"	60'-0"	2880
55-63	47'-0"	47'-0"	31'-4"	31'-4"	1472

SL.NO	NORTH	SOUTH	EAST	WEST	SQFT.
1	40'-0"	40'-0"	50'-0"	50'-0"	2000
13-14	40'-0"	40'-0"	50'-0"	50'-0"	2000
15	54'-0"	54'-0"	50'-0"	50'-0"	2700
17-21	40'-0"	40'-0"	30'-0"	30'-0"	1200
17	40'-0"	40'-0"	30'-0"	30'-0"	1200
22-26	40'-0"	40'-0"	50'-0"	50'-0"	2000
28-32	40'-0"	40'-0"	40'-0"	40'-0"	1600
33/A	56'-0"	56'-0"	42'-0"	42'-0"	2352
34-36	48'-0"	48'-0"	42'-0"	42'-0"	2016
37	41'-3"	41'-3"	42'-0"	42'-0"	1732
91	40'-0"	40'-0"	40'-0"	40'-0"	1600
93	40'-0"	40'-0"	50'-0"	50'-0"	2000
101-105	40'-0"	40'-0"	50'-0"	50'-0"	2000
106/A	46'-0"	46'-0"	35'-0"	35'-0"	1610
107/A	58'-0"	58'-0"	35'-0"	35'-0"	2030
108-109	45'-0"	45'-0"	45'-0"	45'-0"	2025
110	45'-0"	45'-0"	45'-0"	46'-5"	2025
111	43'-0"	43'-0"	46'-5"	48'-6"	1995
112	41'-0"	41'-0"	48'-6"	50'-0"	2019
113	40'-0"	40'-0"	50'-0"	52'-0"	2040
114	47'-0"	50'-0"	52'-0"	54'-0"	2570
115	58'-0"	60'-0"	40'-0"	40'-0"	2360
116-117	50'-0"	50'-0"	40'-0"	40'-0"	2000
118	46'-0"	46'-0"	40'-0"	40'-0"	1840
119	54'-0"	54'-0"	40'-0"	40'-0"	2160
120	50'-0"	50'-0"	40'-0"	40'-0"	2000
121	50'-0"	50'-0"	42'-0"	42'-0"	2100
122	54'-0"	54'-0"	42'-0"	42'-0"	2268
123	28'-7"	28'-7"	42'-0"	42'-0"	1200
124	67'-5"	67'-5"	42'-0"	42'-0"	2832
125	45'-0"	45'-0"	42'-0"	42'-0"	1890
126	41'-0"	41'-0"	42'-0"	42'-0"	1722
127	37'-0"	37'-0"	60'-0"	60'-0"	2220
128	36'-0"	36'-0"	60'-0"	60'-0"	2100
129	37'-0"	37'-0"	60'-0"	60'-0"	2220
130/A	42'-0"	42'-0"	70'-0"	70'-0"	2940
131/B	46'-0"	46'-0"	35'-0"	35'-0"	1610
132/B	58'-0"	58'-0"	35'-0"	35'-0"	2030
133/B	40'-0"	40'-0"	70'-0"	70'-0"	2800
134	58'-0"	58'-0"	35'-0"	35'-0"	2030
135-136	71'-0"	71'-0"	35'-0"	35'-0"	2485
137/A	71'-0"	71'-0"	35'-0"	35'-0"	2485
138/A	71'-0"	71'-0"	35'-0"	35'-0"	2485
139/A	58'-0"	58'-0"	35'-0"	35'-0"	2030
140/A	58'-0"	58'-0"	35'-0"	35'-0"	2030
141/A	46'-0"	46'-0"	35'-0"	35'-0"	1610
141/145	55'-0"	55'-0"	37'-0"	37'-0"	2035