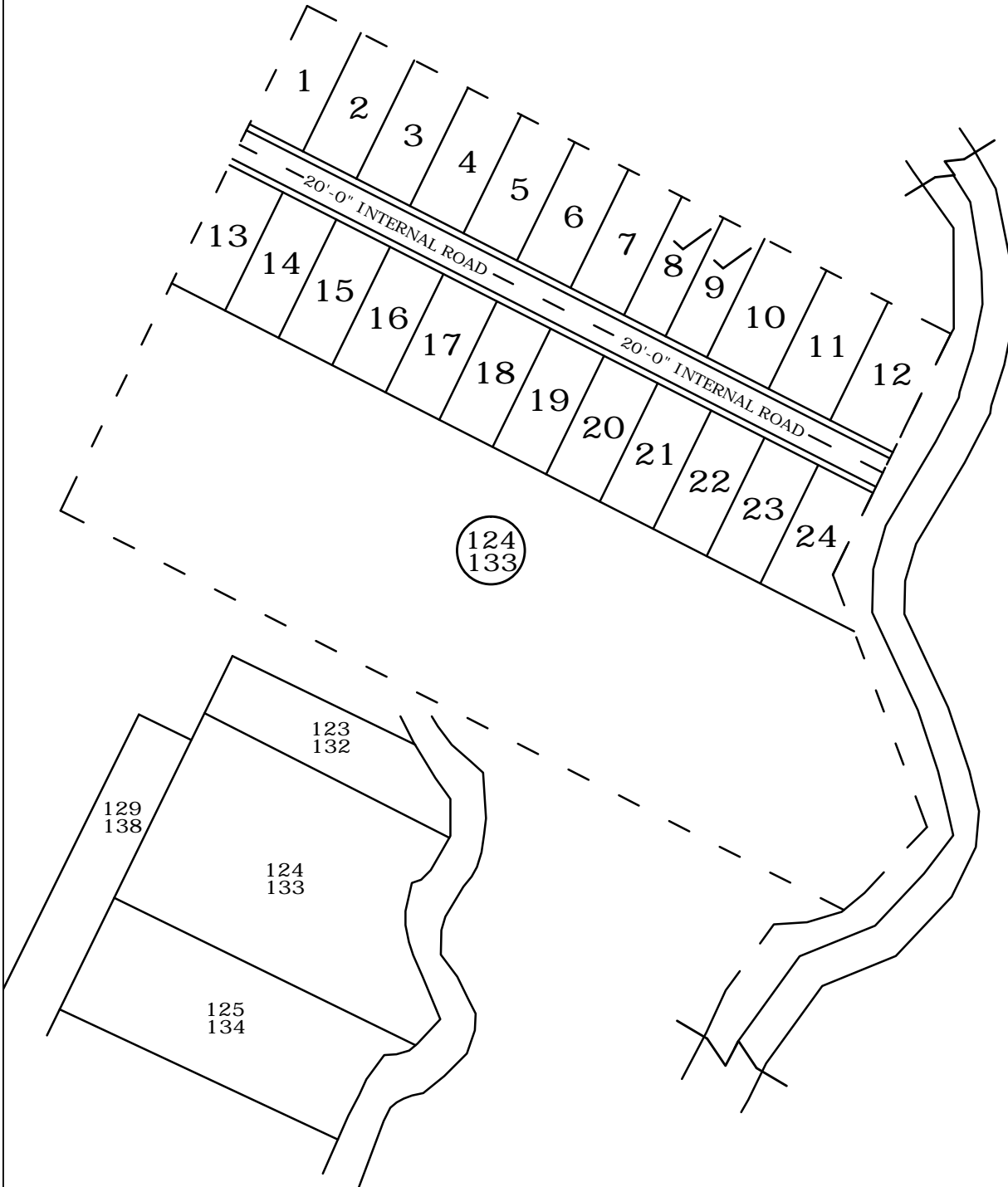
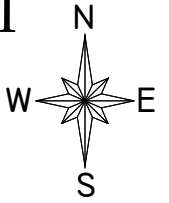


**NIMRA PHASE - I**  
 MOUZA - BENABILI  
 TAHASIL - PIPILI  
 DIST - PURI



PLOT NO. 133= 2.000/87120sqft. (1.000- 43560sqft.)  
 TOTAL SALE AREA= 37184sqft.  
 TOTAL ROAD AREA= 6376sqft.

SL.NO	NORTH	SOUTH	EAST	WAST	SQ.FT.
1-7	26'-6"	26'-6"	58'-2"	58'-2"	1548
8	20.61	20.61	58'-2"	58'-2"	1200
9	20.61	20.61	58'-2"	58'-2"	1200
10-12	30.66	30.66	58'-2"	58'-2"	1784
13-23	26'-6"	26'-6"	58'-2"	58'-2"	1200
24	27'-1"	27'-1"	58'-2"	58'-2"	1547
		19'-3"	26'-7"	18'-0"	215